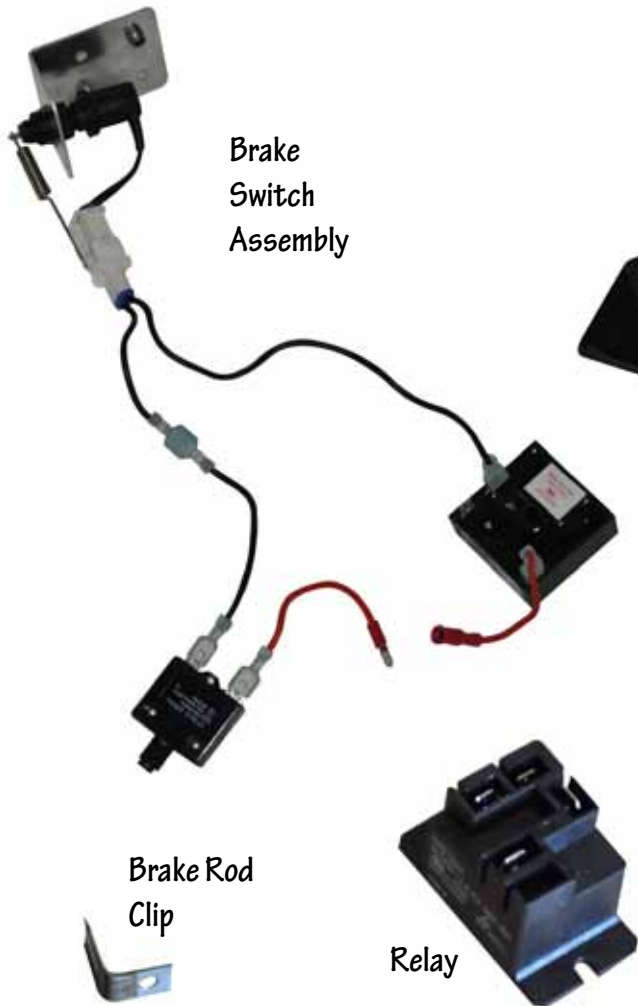




Ultimate Light Kit Upgrade for Club Car Precedent Installation Instructions



Brake Switch Assembly

Brake Rod Clip

Relay



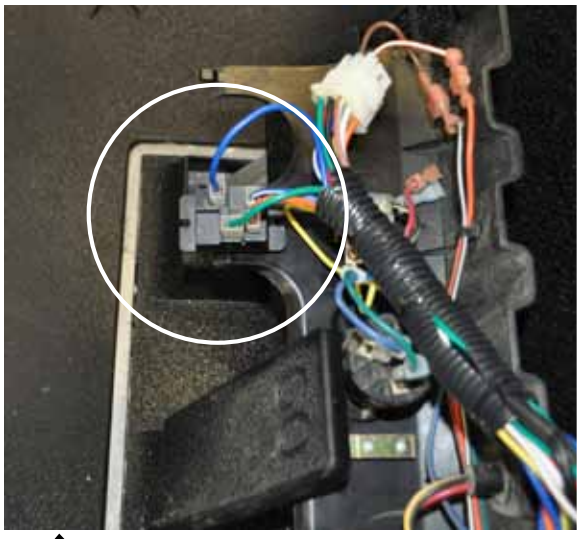
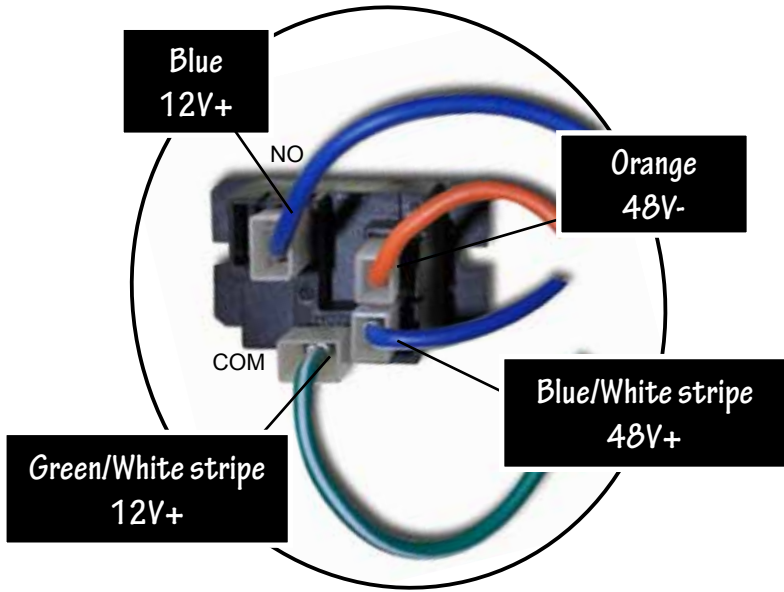
Horn

Steering Column Cover



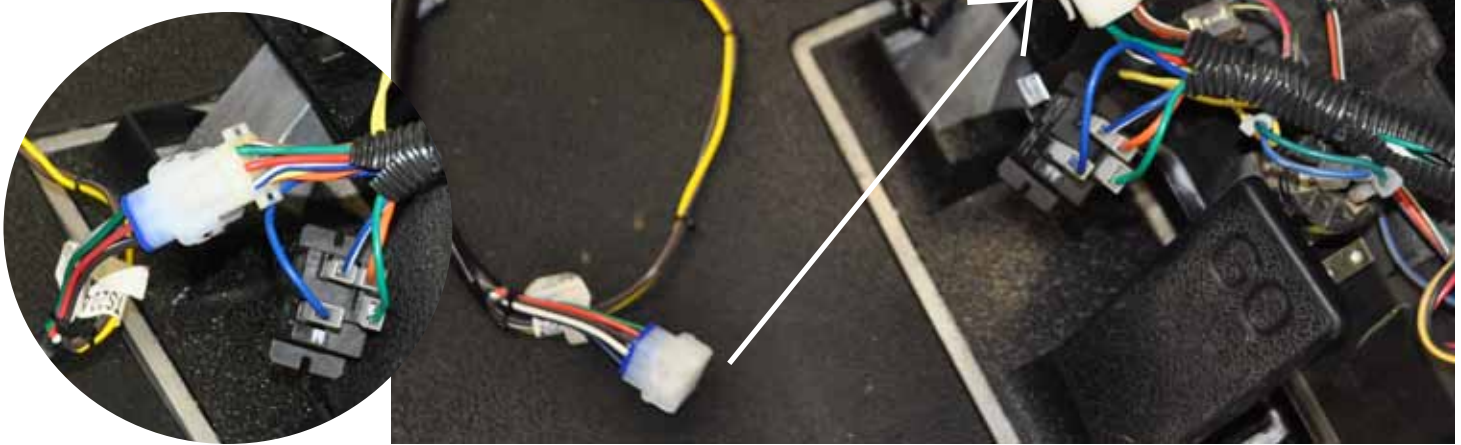
Turn Signal Indicator

1. Remove and retain 3 screws from dash panel. Lift off dash panel.



2. Install relay to existing light harness

3. Connect 9-pin connector from signal indicator to 9 pin connector on harness from light kit.





4. Attach turn signal indicator to steering column with Hose Clamp.

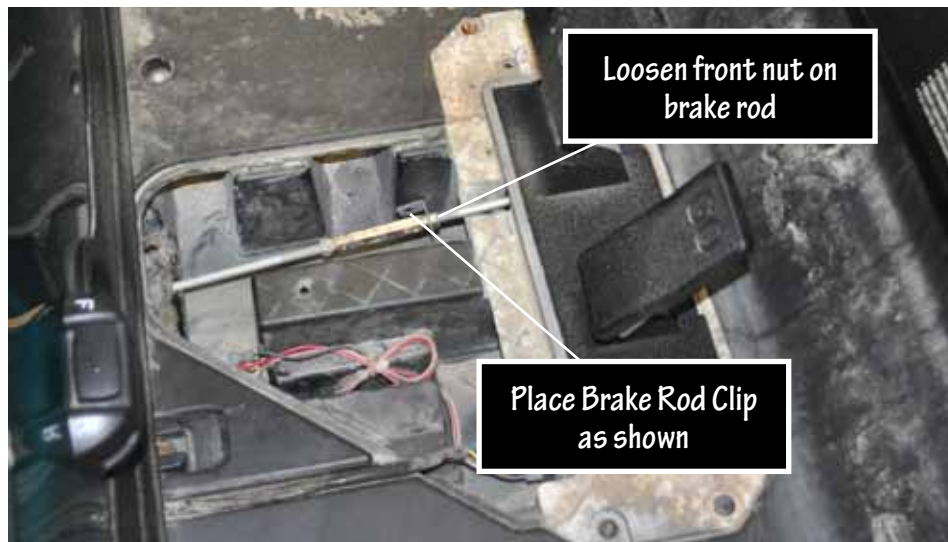


5. Remove and retain 4 torx head screws from floor panel of vehicle.



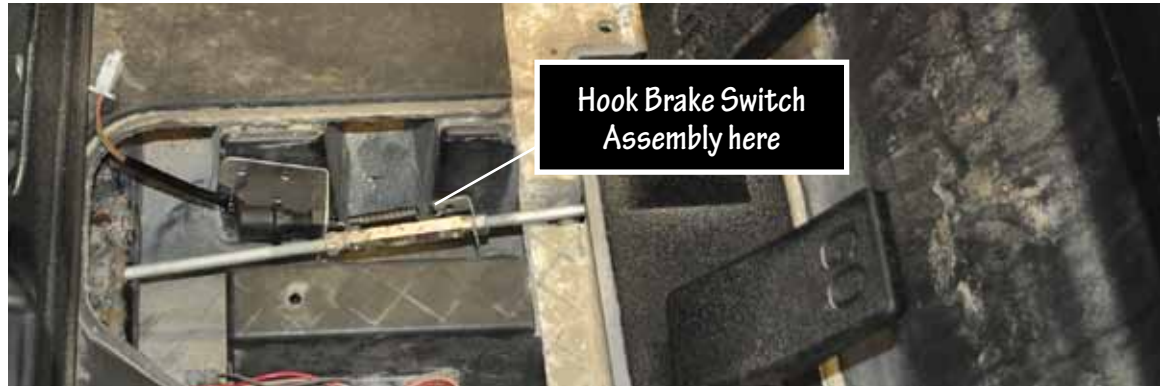
6. Remove Floor Mat and brake cover plate.

7. Loosen Front nut on Brake rod. Place Brake rod clip as shown. Tighten nut to hold in place.



Place Brake Rod Clip as shown

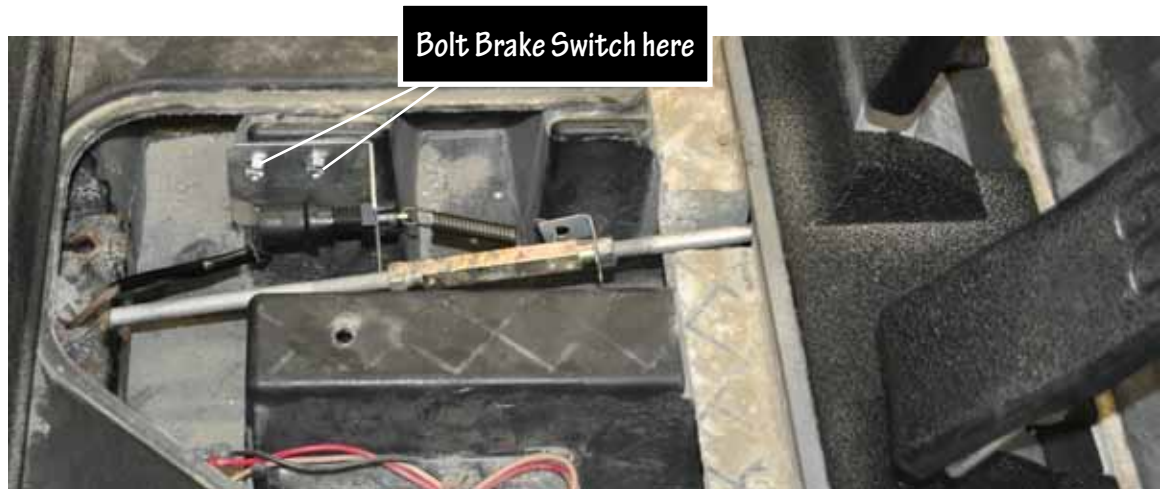
8. Hook Brake Switch assembly to Brake Rod Clip as shown.



9. With Parking Brake OFF, put slight tension on spring of Brake Switch. Use Bracket as template and drill two 1/8" pilot holes.



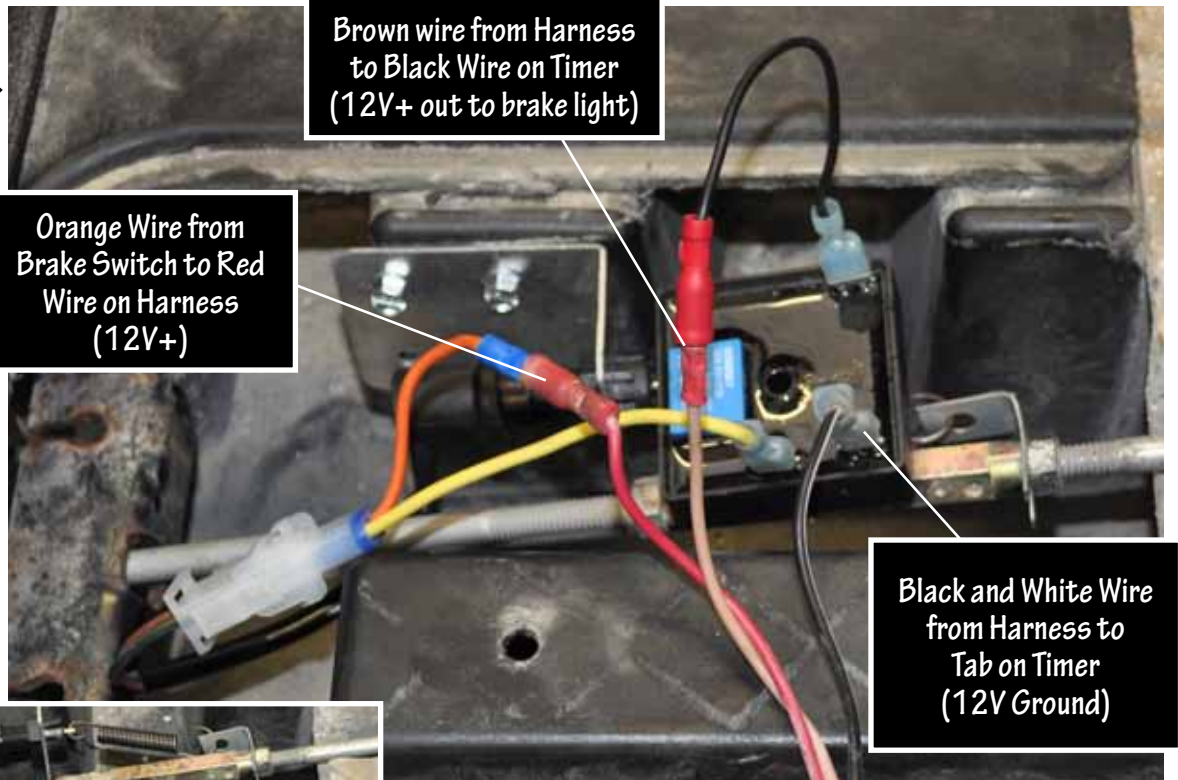
10. Bolt Brake Switch Bracket to Frame.



11. Plug timer relay into brake switch.



12. Pull out existing harness. Connect wires as instructed in photo. Place brake light assembly in right side of well as shown.



Brown wire from Harness to Black Wire on Timer (12V+ out to brake light)

Orange Wire from Brake Switch to Red Wire on Harness (12V+)

Black and White Wire from Harness to Tab on Timer (12V Ground)



13. With key switch ON, depress and lock parking brake to test brake lights. If they do not light, adjust switch, disconnect connector to brake light switch and turn adjusting nut on brake light switch for proper tension on spring.



14. Replace Brake cover Plate.

15. Replace Floor Mat using screws retained in step 7.



16. Install Horn. Remove Headlight by removing bolts that secure light to vehicle frame. Retain hardware. Remove and retain bolt from support bracket under front end of vehicle on the driver side near VIN tag. Use bolt to attach Horn.



17. Attach black and orange wires on Headlight assembly to Horn.



18. Reattach Headlight assembly.





19. Fit harness assembly in dash. Route Signal indicator Harness through round opening with steering column. Attach dash panel with screws retained in step 1.



20. Snap on Steering Column Cover. Gutter of Cover is for Signal Indicator Harness.

