



# CTIONS



Headlights

Tail Lights

Turn Indicator

Wiring Harness

Column Cover



ar  
g.  
ns

Cut out template and place it against cart using the body lines for alignment. Repeat on



Using the template you drew on the cart, cut out the light area of the cowl starting at the pilot hole from step 3.



Place tail light template against cart. Using a writing utensil, draw the template onto the cart. Repeat

shape of the tail light.



Mount indicator assembly using clamps provided and tighten.  
Run indicator harness along steering column and insert harness through dash.



Remove dash for easy access when installing push/pull switch. Both yellow wires from indicator harness go into the push/pull switch which will operate the hazard lights only. The purple wire from the indicator harness connects to the blue wire on main harness. (red wire is not used)



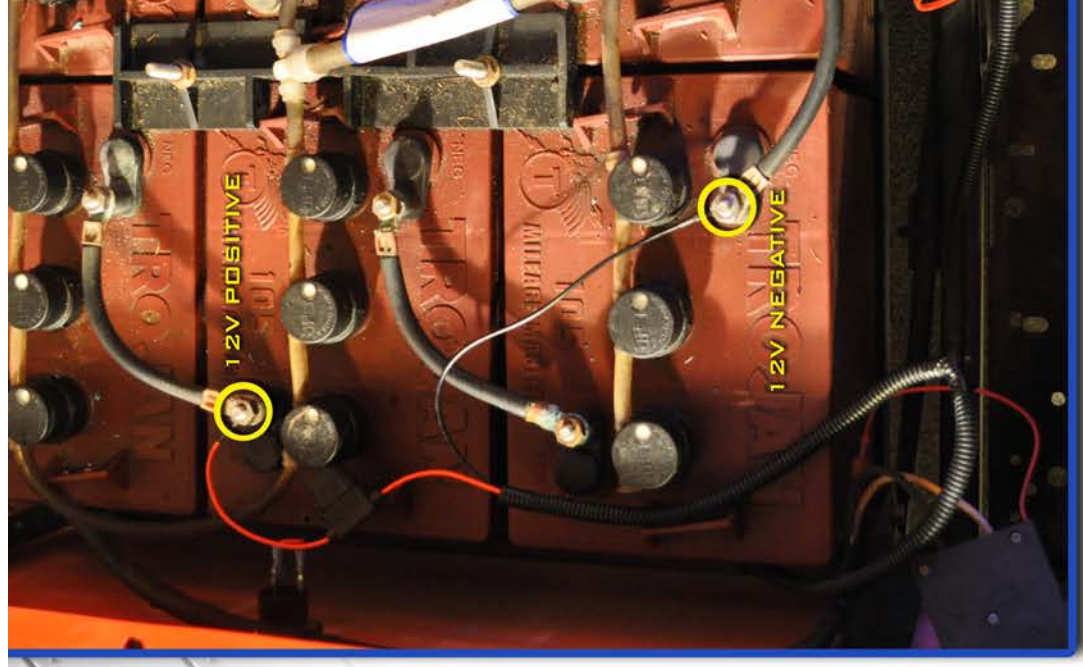
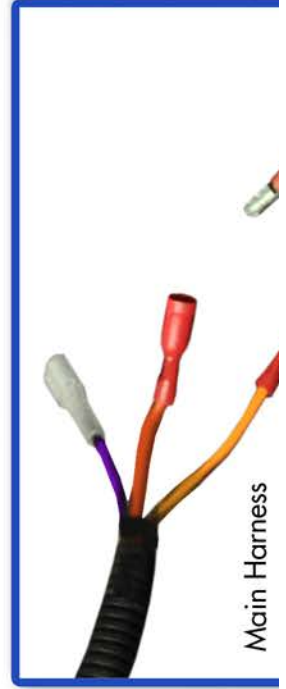
Feed threaded end of switch through the dash where the hole



hazard lights.



Attach brake pad using hardware provided as shown. Secure brake pad wires to pedal using zip ties provided.



Connect the wiring harness to one battery connection and another battery's negative connection. Be sure the two batteries used are connected together.