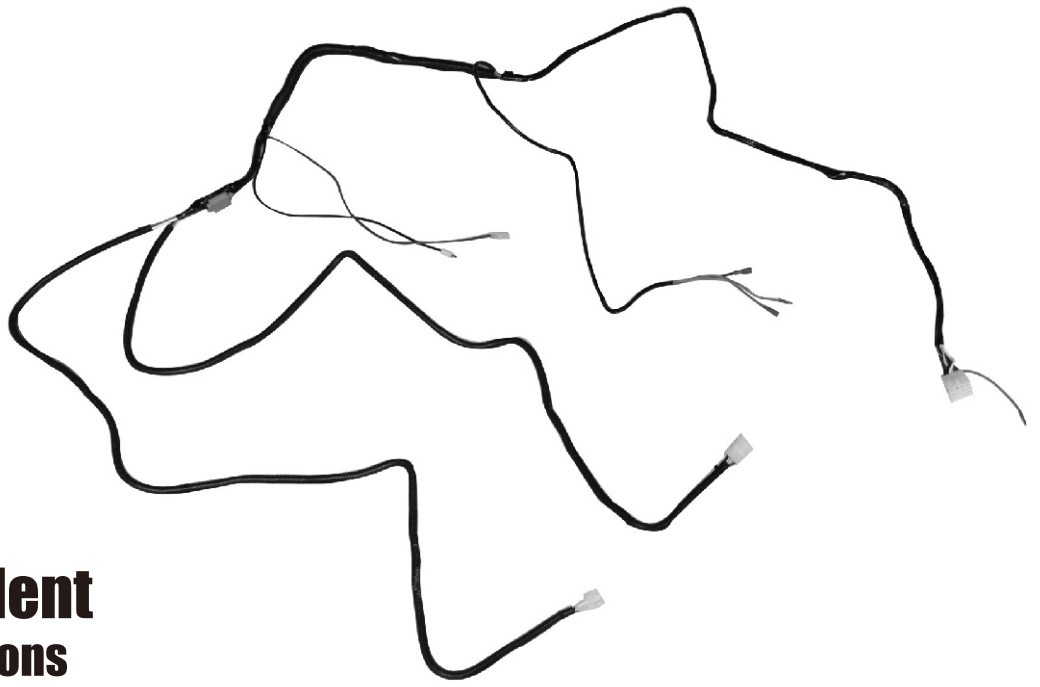


Bucket Harness for Electric Club Car Precedent Installation Instructions



Electric Club Car Precedents manufactured after January 1, 2008 require a harness before light packages can be installed. Instructions for installing the harness on 12 volt carts follow. Precedents with an 8-volt battery configuration have different instructions on step 17 (see note) require a voltage limiter. Please refer to the battery diagrams on the last page of these instructions.

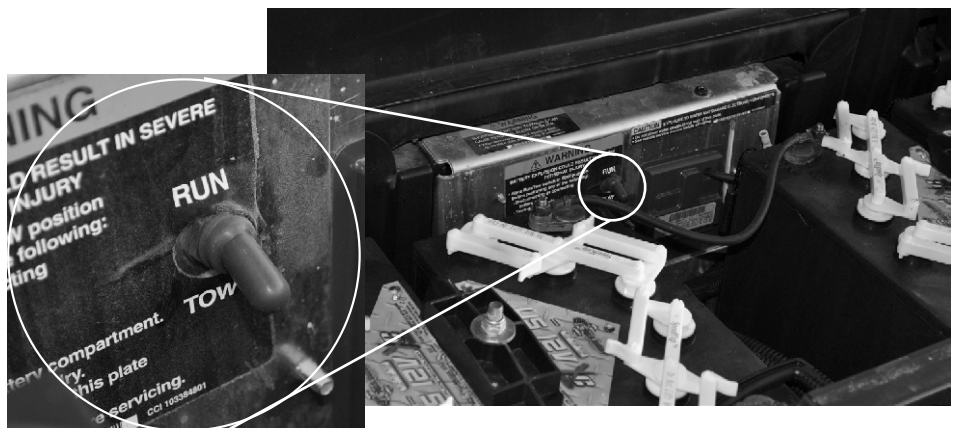
1. Remove the front seat bottom cushion to expose vehicle battery compartment.



2. Turn the key switch OFF.



3. Turn TOW switch to TOW.



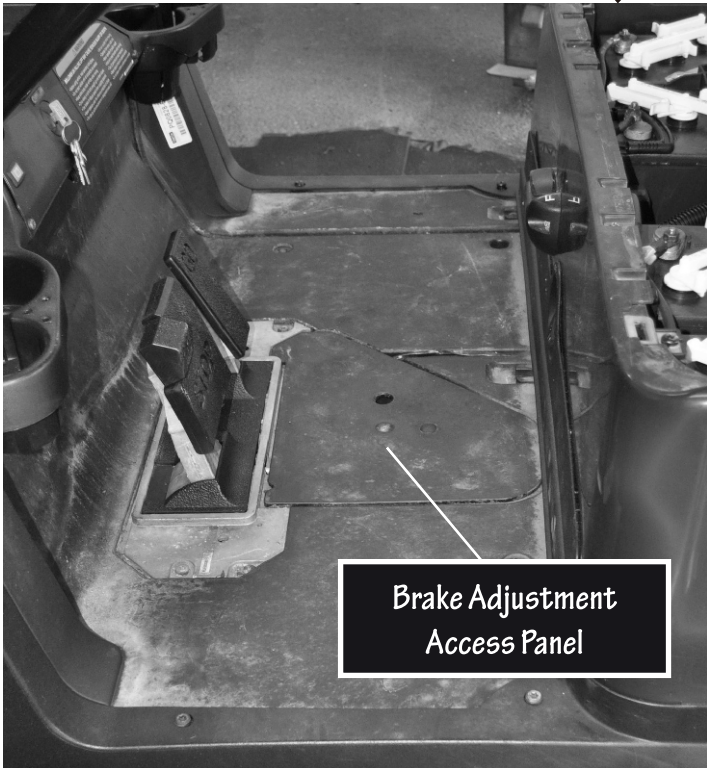
4. Disconnect the ground wire from the negative post on #4 battery on the driver side. (See Battery Diagram on the last page of these instructions)



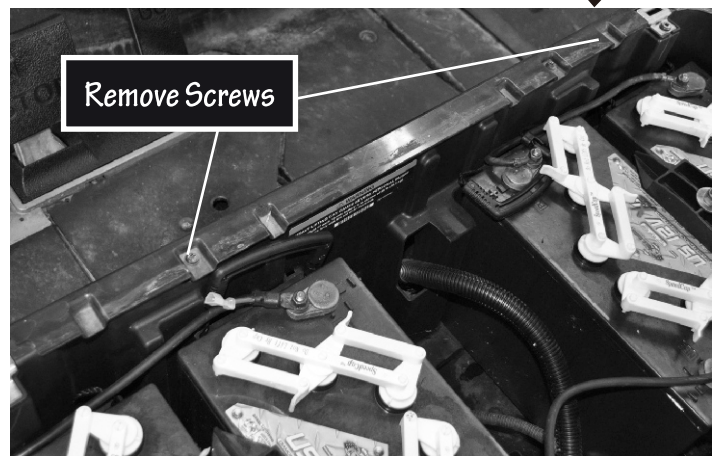
5. Loosen the four screws that secure the floor mat to the vehicle. Lift out the floor mat.



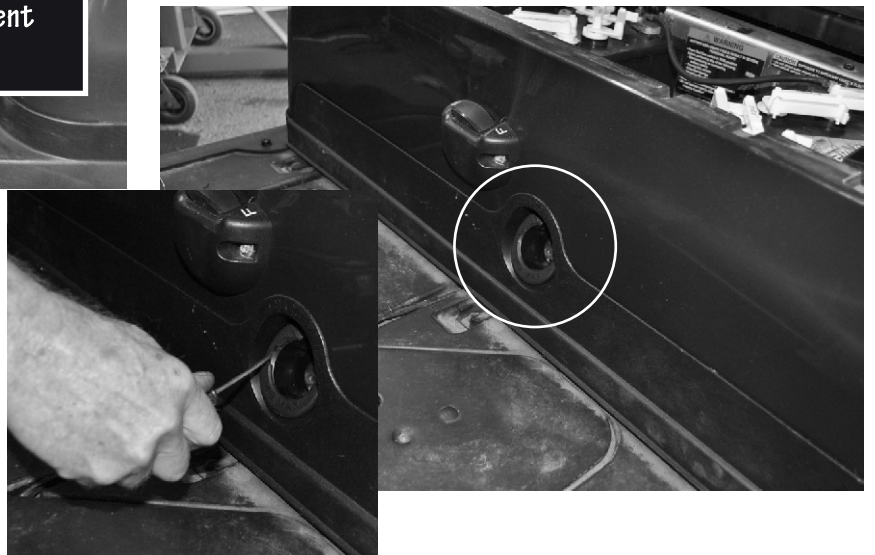
6. Remove the brake adjustment access panel.

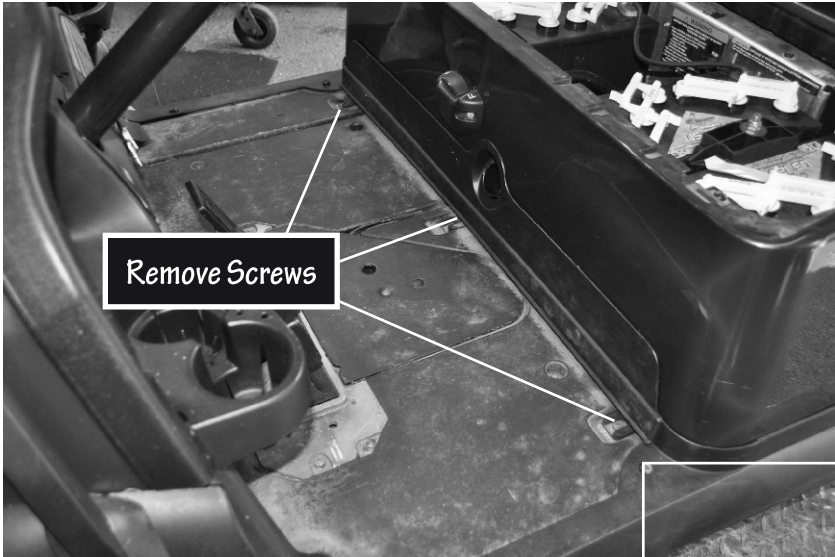


7. Remove and retain the front body screws.



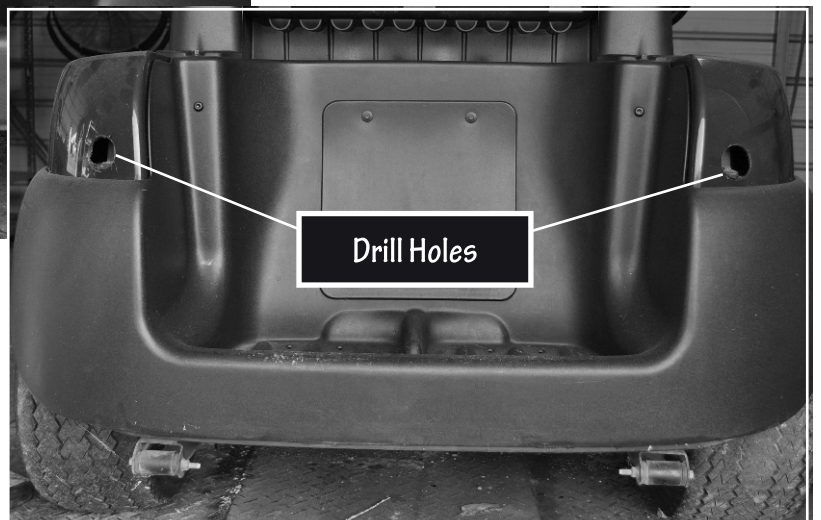
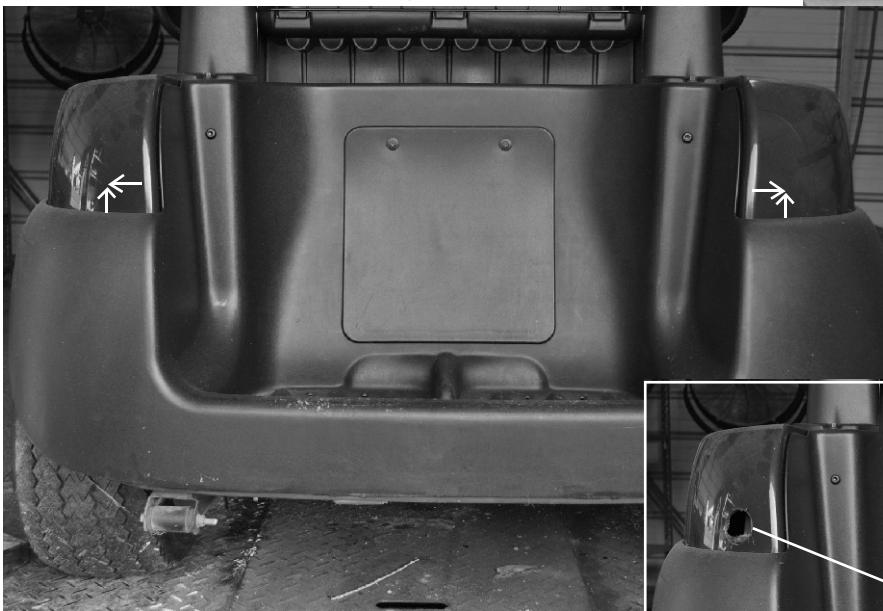
8. Using a small screwdriver, pry charge receptacle cover from vehicle.



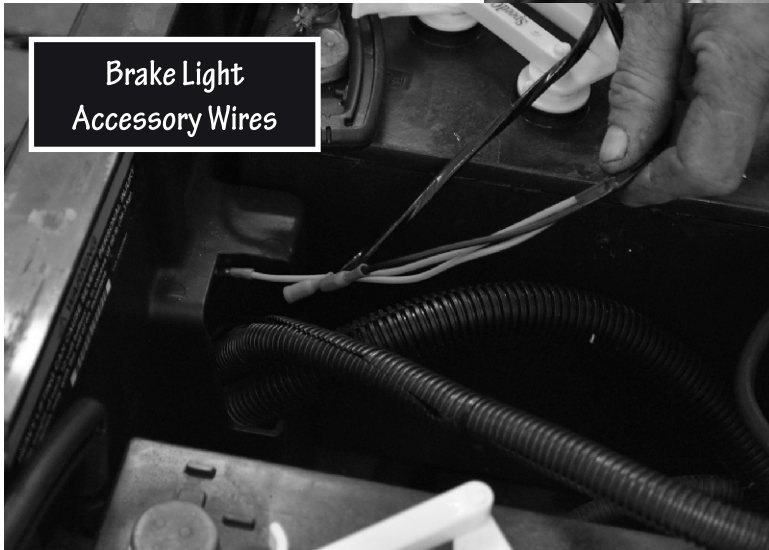
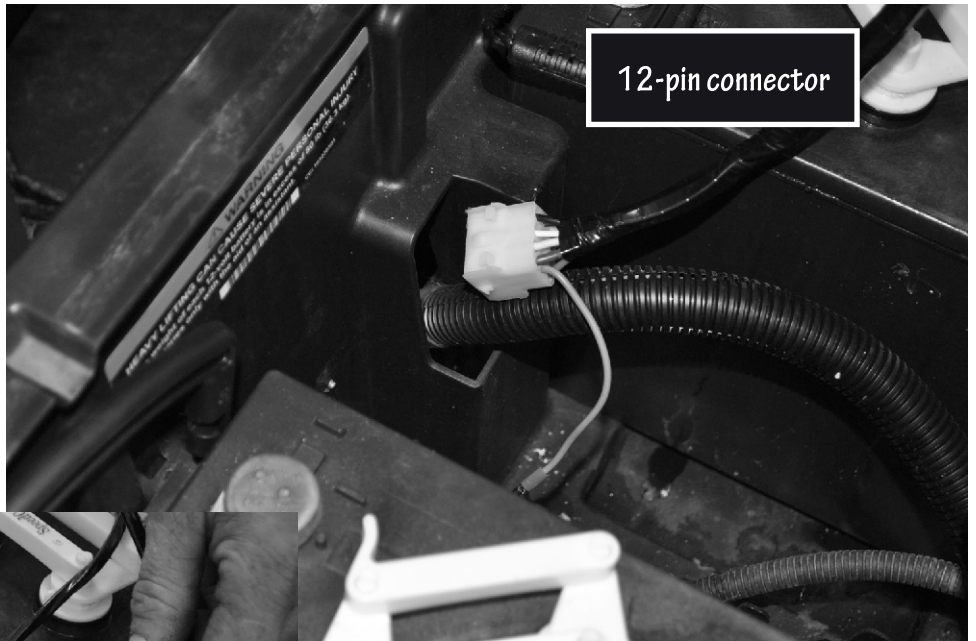


9. Remove and retain the 3 screws that secure the lower body trim to the body and lift off the lower body trim. ↓

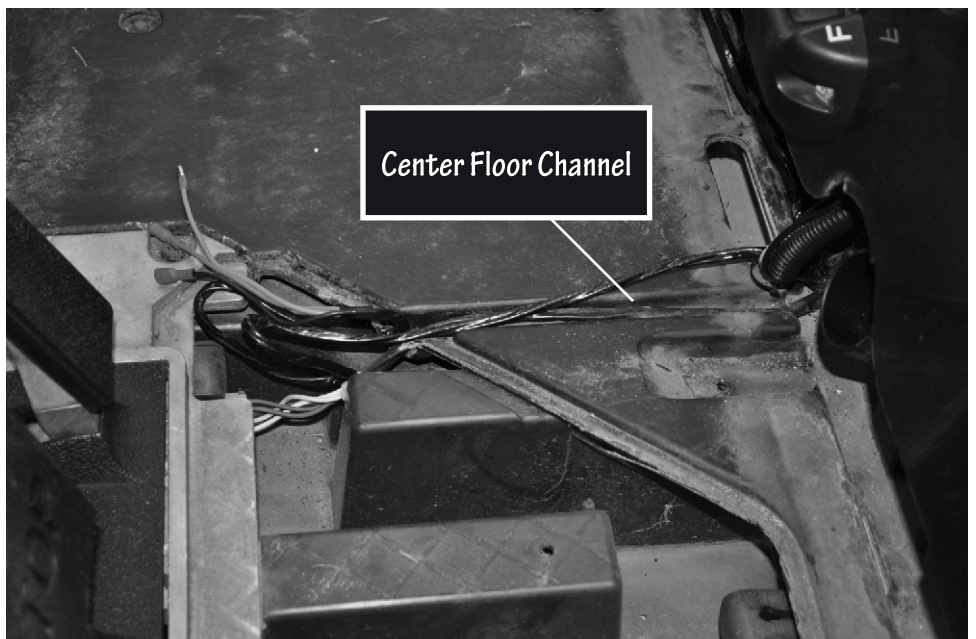
10. Position the tail lights in the rear of the vehicle. From the top edge of the rear bumper, measure upward 1-1/2 inches and draw a horizontal line. From the edge of the vehicle body that begins to curve toward bag well, measure horizontally 2-1/4 inches and draw a vertical line. At the intersection of the two lines, mark with a center punch. Use a 1-1/2 inch hole saw to drill holes. ↓

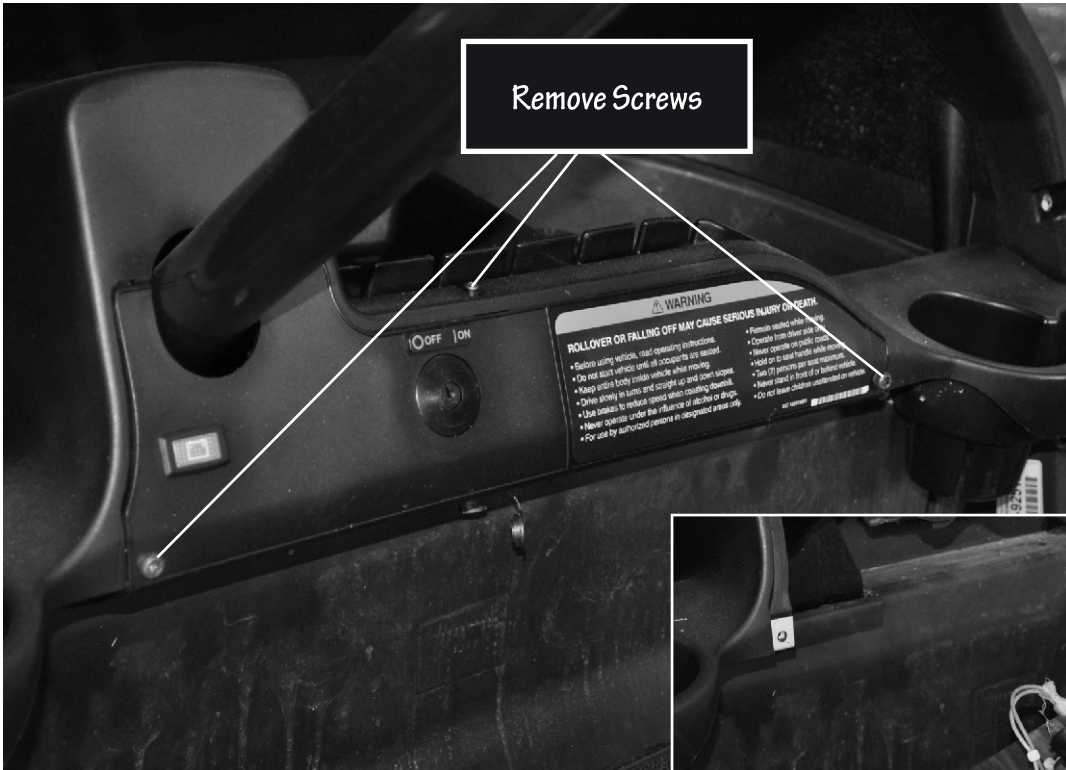


11. Thread the 12-pin connector and Brake Light Accessory Wires from inside the battery compartment through the hole where the existing main harness feeds.



12. Follow the path of the existing main harness and pull Brake Light Accessory Wires through the center floor channel that leads to the brake compartment.

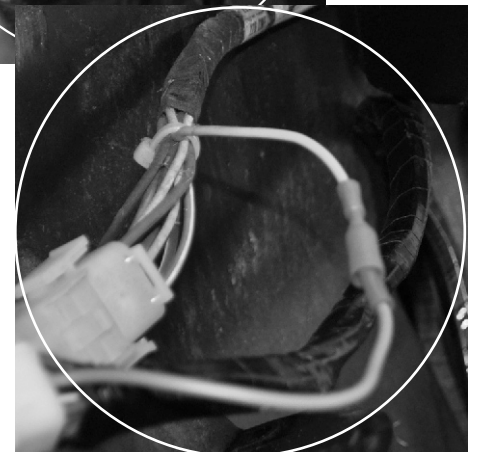
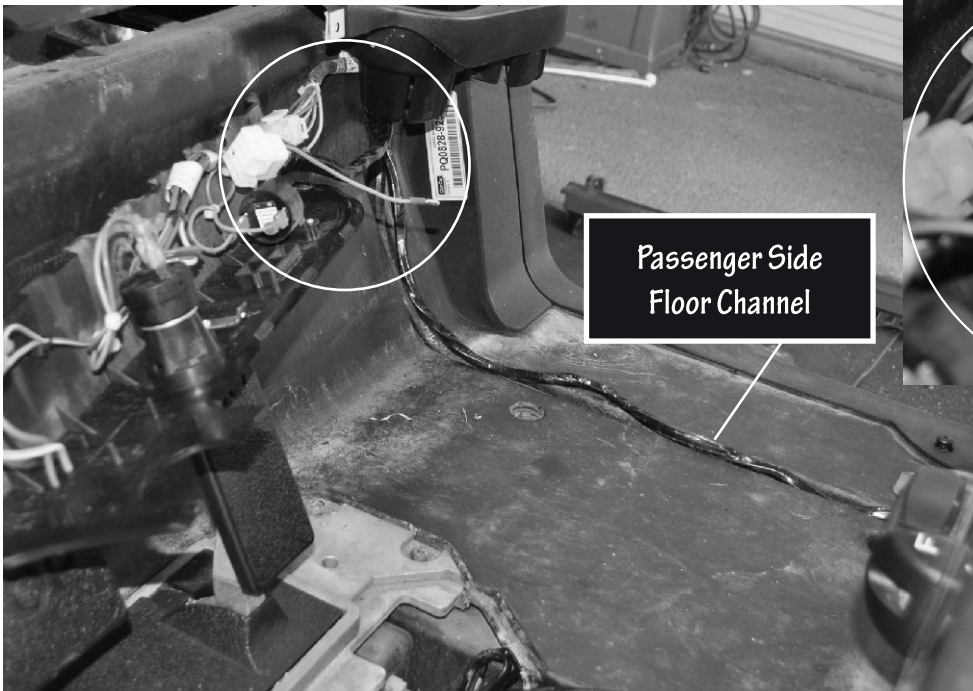




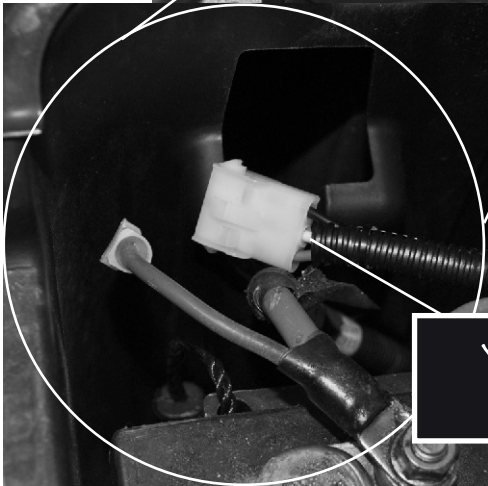
13. Remove and retain the screws that secure the dash panel to vehicle. Lift off panel.



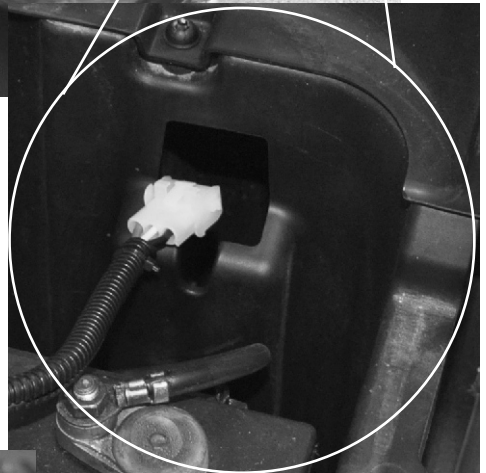
14. Following the path of the main harness, feed the 12-pin connector portion of new harness along the floor channel on passenger side of vehicle and up under the dash. Connect the red male bullet connector (gray wire) on the new harness to the red female bullet connector (gray wire) on the existing harness.



15. Using a wire snake (not supplied) route the tail light wires through the holes in the upper corners of the battery box on the passenger and driver sides. The passenger side is the one that has the yellow wire in the 3-plug connector. Feed the snake through the tail light holes previously drilled.

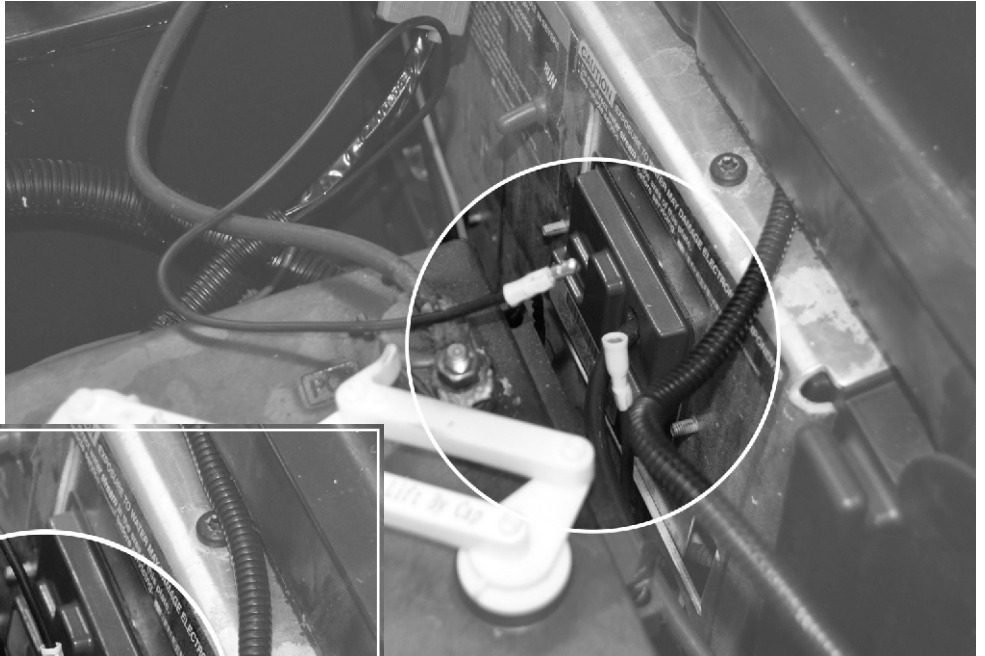


Yellow Wire goes on Passenger Side



Feed through hole in tail light position on each side of vehicle

16. Behind battery #3 (see illustration) is a black #12 wire with a yellow female bullet connector. Connect the yellow male bullet connector on the new light harness with this yellow female bullet connector.



17. Connect blue wire on the new harness to the #12 wire with male connector on the #3 battery (see diagram).



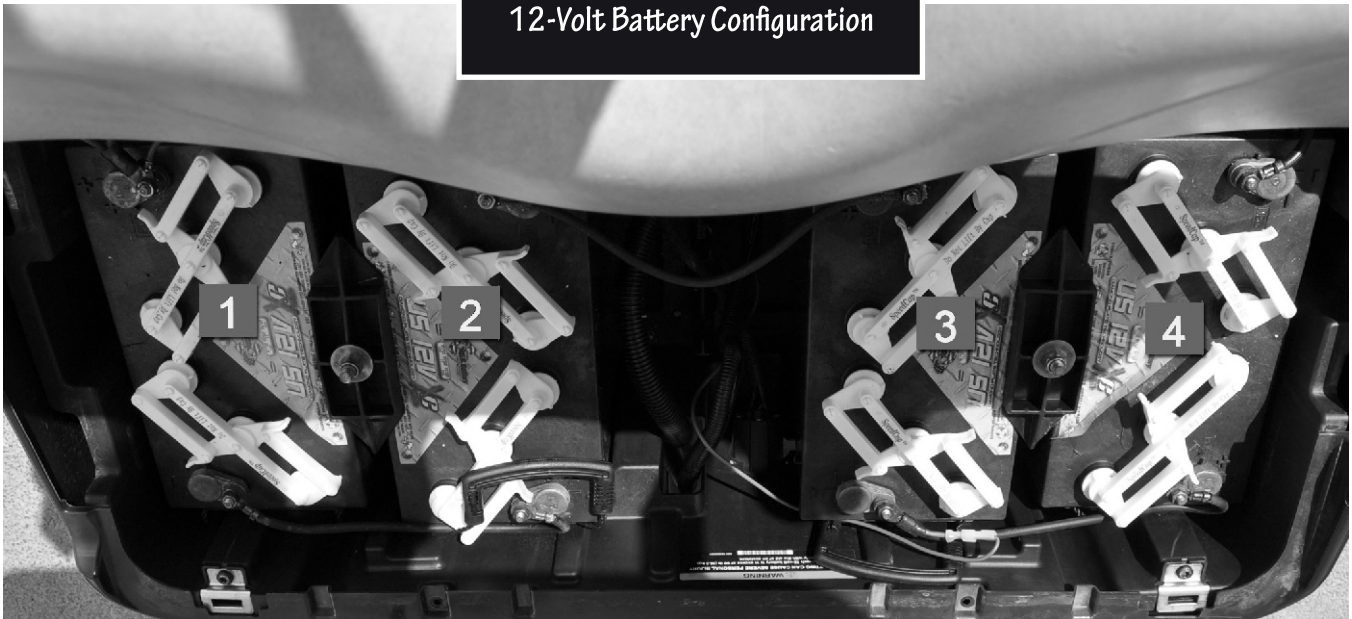
DO NOT connect to the blue wire on battery #1 as this will connect to a 48 volt source and will damage the lights.



Note for 8 volt battery configuration: connect blue wire on the new harness to the #12 wire with male connector on the #4 battery (see diagram). *a voltage limiter is recommended when installing harness to an 8 volt battery configuration.

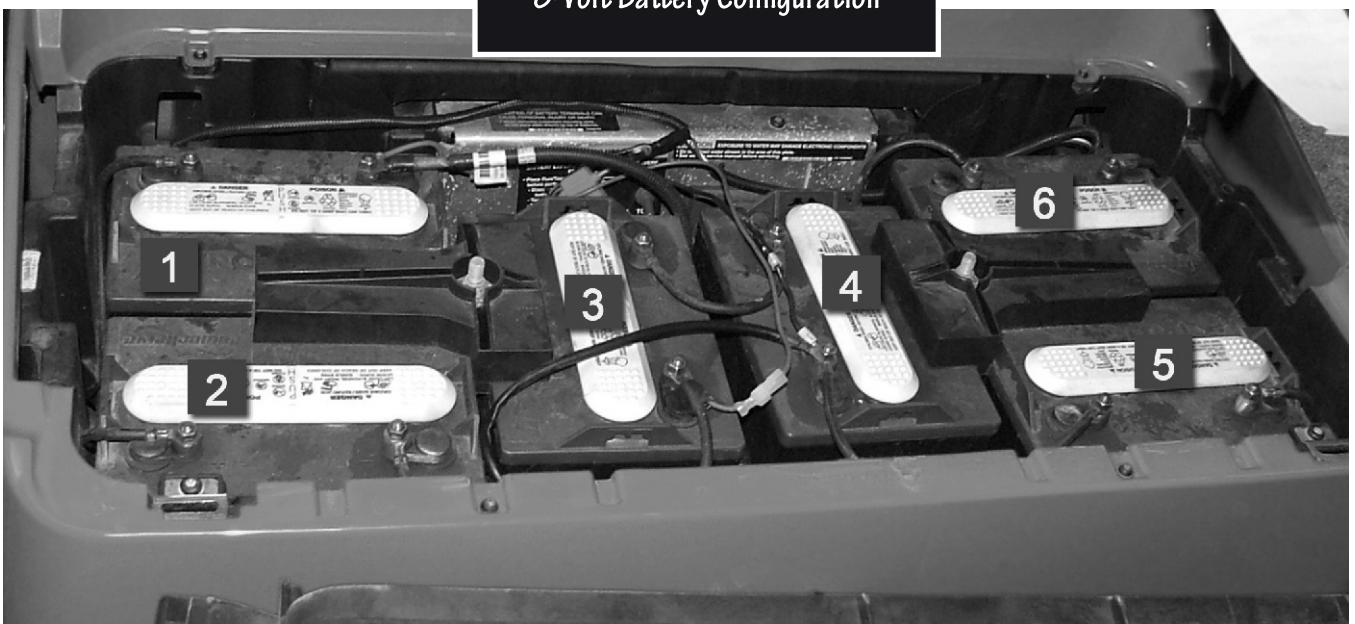
18. Install Light Kit according to manufacturer instructions.
19. Reconnect the ground wire on #4 Battery that was disconnected in step 4.
20. Turn TOW switch to RUN position (see step 3 for illustration). Turn Key switch on ON position (see step 2 for illustration). Brake lights will not work if these switches are not turned as instructed.
21. Test Lights.
22. Replace lower body trim (see step 9), receptacle cover (see step 8), front body screws (see step 7) brake adjustment access cover (see step 6), floor mat (see step 5) and dash access cover (see step 13).

12-Volt Battery Configuration



Front of Cart ↙

8-Volt Battery Configuration



Front of Cart ↙