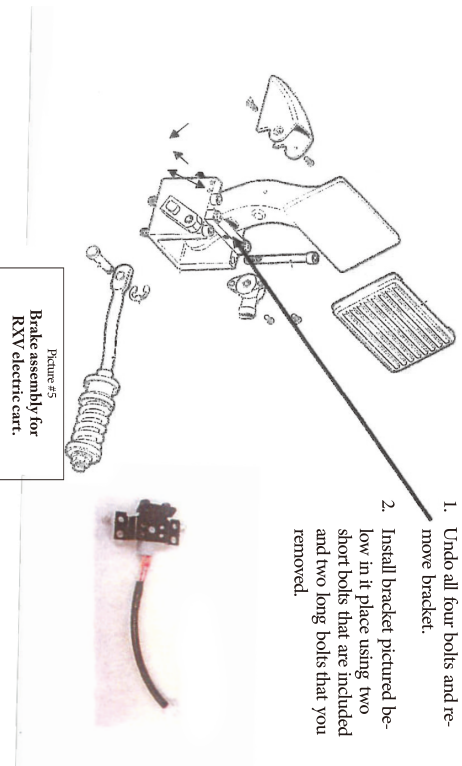


Picture #4
Brake Pedal Bracket for RXV Gas Cart



1. Undo all four bolts and re-move bracket.
2. Install bracket pictured below in it place using two short bolts that are included and two long bolts that you removed.

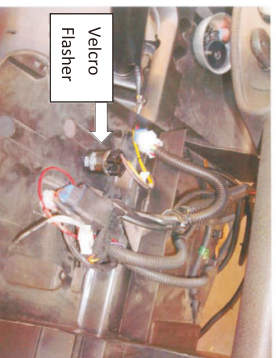
INSTALLATION INSTRUCTIONS

RXV Basic/Deluxe Light Package



1. Remove the rocker panels (kick plates) from both the driver side and passenger side by removing 5 Torx head screws from each rocker panel. Lift out the rocker panels.
2. Remove the rubber floor mat by first removing 7 Christmas tree clips.
3. Remove brake access panel by first removing 4 Christmas tree clips.
4. Lift off the seat from its hinges removing it completely to gain access to the battery compartment.
5. Remove the two seat hinges from the body of the cart by removing two Torx bolts in each one.
6. Remove the four cup drink holder by removing three "star" shaped locking nuts located underneath the tray. Lift out the drink holder and you will see the lower tray which stays in place.
7. Remove the cowl from the cart by turning out four Torx head screws that are located in the dash. Notice that the cowl is removed from the cart by pulling it off two spring loaded clasps – one on each side. Remove the cowl.
8. Work on the cutouts for the tail lights. Use scissors to cut out the ovals and tape the template in place on the passenger side. Use a Dremel tool or other cutting device to cut inside the line for the tail light cutout. Check the size of the opening by placing the bezel in the opening. You may have to trim a bit more. Do not attach the bezels to the cart until after you have wired the tail light. Use the #8 black screws that are provided to secure the bezels in place. Reverse the template to use on the other tail light.
9. Cutting in the headlights: This can be done while the cowl is removed from the cart. Tape the template to the cowl and trace a line for the cutout. Cut inside the line as there is very little room for error. Install the headlights in the opening and secure with clips that should lock in place. The clips may need a bit of tweaking. Use needle nose pliers and by working from the inside of the cowl, bend each clip so as to secure the bezel.

10. Attach the turn signal switch (Deluxe Kit) or horn button (Deluxe Kit) to the steering column with the hose clamp that is included. Position the clamp 3-1/2 inches down from the bottom of the steering wheel. Do this so that you have enough slack in the wires so that the 9-pin connector and the flasher will reach inside the drink holder tray from the bottom AND so that you have enough room to slide the black ABS column cover in place to hide the wires. By grabbing the front of the lower tray of the drink holder, lift upward to create an opening and push both the 9-pin connector and the flasher into the tray from the bottom on the driver's side. Use Velcro that is provided and adhere the flasher to the tray bottom as pictured above.



picture #1

11. Position the wiring harness on the floorboard of the cart. Find the 9-pin connector and the headlight wire and route to the front of the cart. The vinyl taped part will lay in the channel with the factory cart harness. (The Basic Light Kit harness is not wrapped in tape but utilizes loom instead.) Now you can plug in the 9-pin connector to the turn signal switch or horn button switch which also has a 9-pin connector.
12. Now work on threading the harness toward the rear of the cart. You will be laying the new harness alongside the existing harness that is in the channel in the floor board. You will need to thread the new harness into the battery compartment by lifting up the body to allow room for the harness. Use a flat pry bar, or possibly two bars, to raise the body until the two tabs are lifted out of their slots. Push the remaining harness into the battery compartment just in front of the batteries. Locate the passenger side tail light wire and thread it to the passenger side of the batteries and direct it under the plastic housing that has the run/row switch and over the top of the wheel well toward the rear fender. The rest of the harness will be threaded to the driver's side of the battery compartment. Find the driver side tail light wire and thread it back and over the wheel well to the rear fender.

13. (This step applies only to the Deluxe light kits. Skip this step if installing a Basic kit.)

After all wires are in the battery compartment, bring the brake wire (this is the wire the 2-pin connector) back through to the front by laying it in the channel and heading it toward the brake pedal.

14. (This step applies only to the Deluxe light kits. Skip this step if installing a Basic kit.) If you are working on a gas operated RXV, see picture 4 on the next page for a photo of the brake pedal bracket. If the RXV is an electric vehicle, see illustration 5 on the next page. Follow the arrows to complete the installation.

15. Secure all wires with the wire ties that are provided so that none of the wires can catch on the wheels or other moving parts.

16. Connect the 3-pin connector of the tail lights to the 3-pin connector of the wire harness. Tail lights can now be attached to the body of the cart.

17. (This step applies only to the Deluxe light kits. Skip this step if installing a Basic kit.) The horn can now be mounted unto the cart as seen in picture #2. Plug the horn wires into the horn.

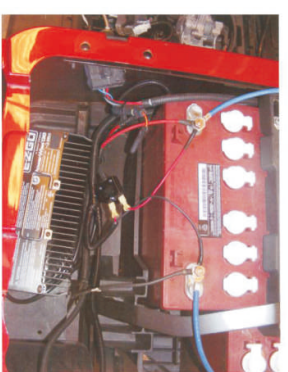
18. Install the headlight/tail light switch by drilling a 3/8-hole on the driver's side adjacent to the State of Charge Meter.

19. Plug the wires into headlights and turn signal lights in the cowl.

20. Now temporarily connect the power wires to the outside battery on the driver's side. Red wire to positive post and black wire to negative post. All should be working including the headlights, tail lights, brake lights, 4-way flashers, horn and turn signals. If all are working, disconnect the wires from the battery. Reassemble all parts in reverse order and reconnect wires to the battery on the driver's side by connecting the red wire to the positive post and black wire to the negative post. See picture #3.



picture #2



picture #3