



UNIVERSAL SEAT BELT BRACKET INSTALLATION INSTRUCTIONS

MJSB8000

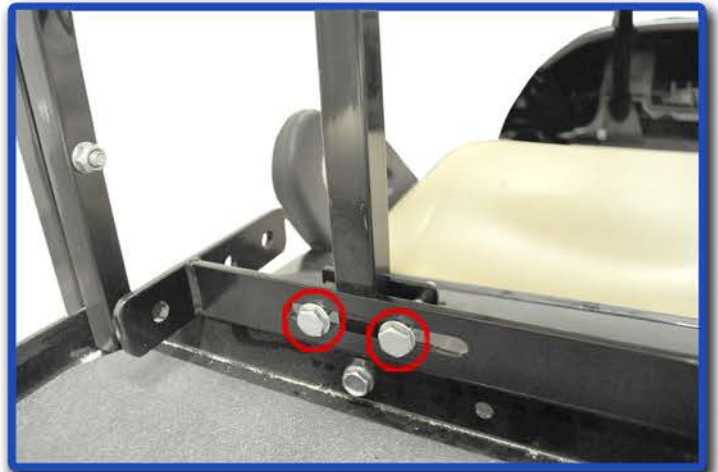
INCLUDED:

- SEAT BELT BRACKET
- 2 MOUNTING BRACKETS
- 4 BOLTS
- 4 ANTI-SLIP NUTS
- 8 WASHERS



Using mounting brackets and hardware provided, place seat belt bar on the rear seat frame and behind the struts as shown.

1

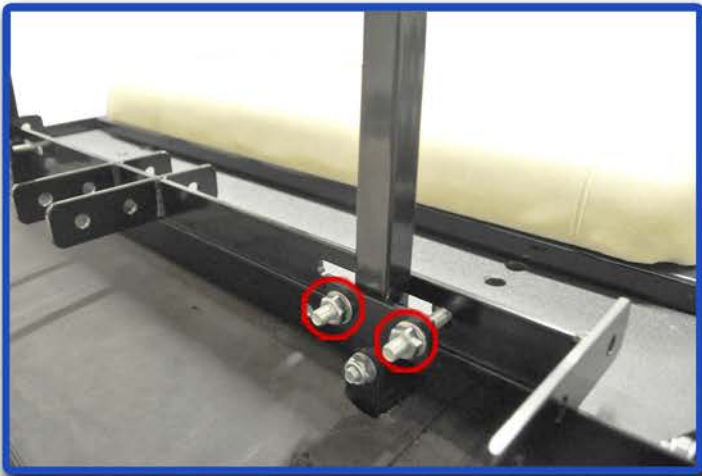


CLUB CAR PRECEDENT

Place mounting bracket on the front side of rear struts. Attach mounting bracket to seat belt bracket and tighten as shown.



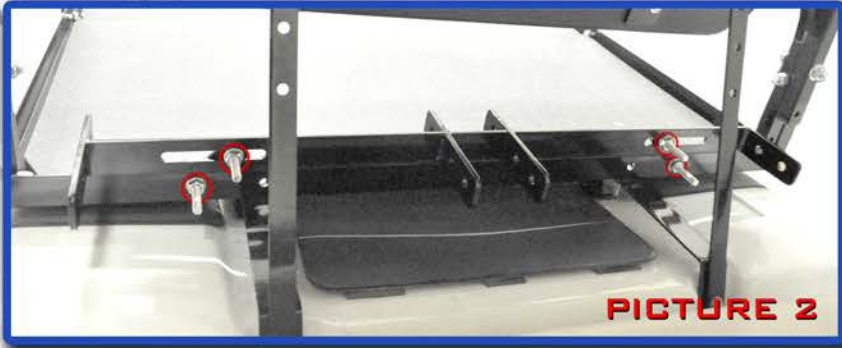
2



CLUB CAR DS



For the Club Car DS, place seat belt bracket on top of the rear seat frame as shown in picture 1.



Using mounting brackets, attach seat belt bar to seat frame using hardware provided and tighten as shown in picture 2.

THE PROPER LOCATION OF THE HOLE WILL DEPEND ON THE TYPE OF VEHICLE YOU HAVE

EZ-Go TXT



For the EZ-Go TXT, place seat belt bracket on the front side of the rear flip seat mounting bracket as shown in picture 1.



Using hardware provided, attach seat belt bar to seat frame and tighten as shown in picture 2.

THE PROPER LOCATION OF THE HOLE WILL DEPEND ON THE TYPE OF VEHICLE YOU HAVE

EZ-Go RXV



For the EZ-Go RXV, place seat belt bracket on top of the rear seat frame as shown in picture 1.



Using mounting brackets, attach seat belt bar to seat frame using hardware provided and tighten as shown in picture 2.

THE PROPER LOCATION OF THE HOLE WILL DEPEND ON THE TYPE OF VEHICLE YOU HAVE

YAMAHA DRIVE

For the Yamaha Drive, place seat belt bracket on top of the rear seat frame as shown in picture 1.



Using mounting brackets, attach seat belt bar to seat frame using hardware provided and tighten as shown in picture 2.

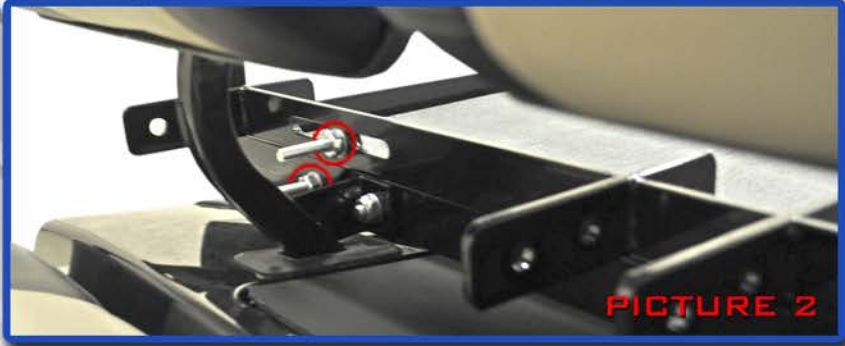


THE PROPER LOCATION OF THE HOLE WILL DEPEND ON THE TYPE OF VEHICLE YOU HAVE

YAMAHA G-SERIES



For the Yamaha G-Series, place seat belt bracket on top of the rear seat frame as shown in picture 1.



Using mounting brackets, attach seat belt bar to seat frame using hardware provided and tighten as shown in picture 2.

THE PROPER LOCATION OF THE HOLE WILL DEPEND ON THE TYPE OF VEHICLE YOU HAVE